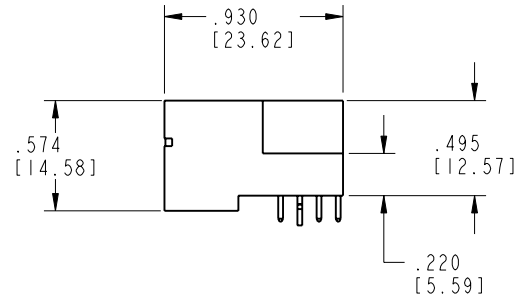
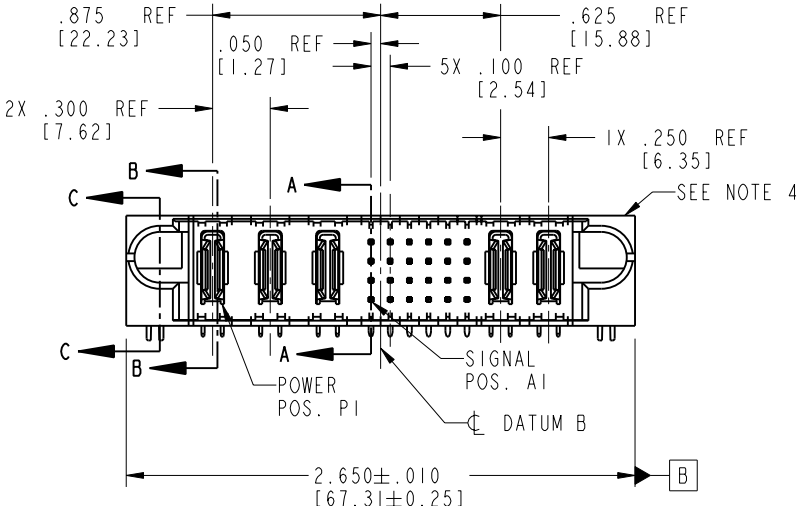
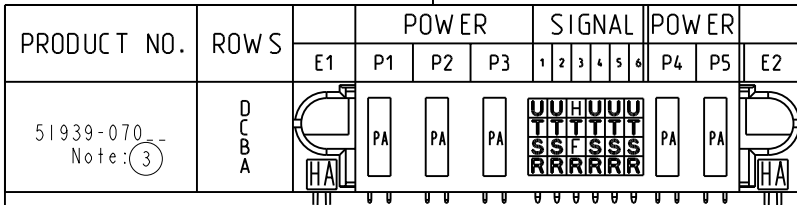


Tous droits strictement réservés. Reproduction ou communication ou des liens interdite sous quelque forme que ce soit sans autorisation écrite du propriétaire. Propriété de c FCI. Droits de reproduction FCI.

All rights strictly reserved. Reproduction or issue to third parties in any form whenever is not permitted without written authority from the proprietor. Property of FCI. Copyright FCI.



CODE	DIM "M" MATING LENGTH	CONTACT TYPE
U	.270 [6.86]	SIGNAL
T	.270 [6.86]	SIGNAL
S	.270 [6.86]	SIGNAL
R	.270 [6.86]	SIGNAL
PA	N/A [N/A]	POWER
HA	N/A [N/A]	HOLD-DOWN
H	.220 [5.59]	SIGNAL
F	.220 [5.59]	SIGNAL

mat'l code SEE NOTE 2				tolerances unless otherwise specified		CUSTOMER		 www.fciconnect.com	
ltr	ecn no.	dr	date	linear	.XX±.01/0.XX±0.3	COPY			
A	V03-0686	MEM	6/18/03		.XXX±.005/0.XX±0.13	projection			
B	V03-0790	MEM	7/16/03	angles	.XXX±.0020/0.XXX±0.051				
C	V03-0897	MEM	8/12/03		0°±2°	INCH/MM			
D	DG05-0112	JMG	05/18/05	dr	M. MOSTOLLER 6/18/03	scale			
E	DG06-0014	JMG	01/12/06	enrg	M. MOSTOLLER 6/18/03	1:1			
				chr	H. BREWBAKER 6/18/03				
				appd	M. MOSTOLLER 6/18/03				
sheet index		revision sheet		E	E	E	E	product family PwrBlade code 213	
		1 2		3	4			size dwg no 51939-070 sheet 1 of 4	

Pro/E 3 | coge code 22526 4

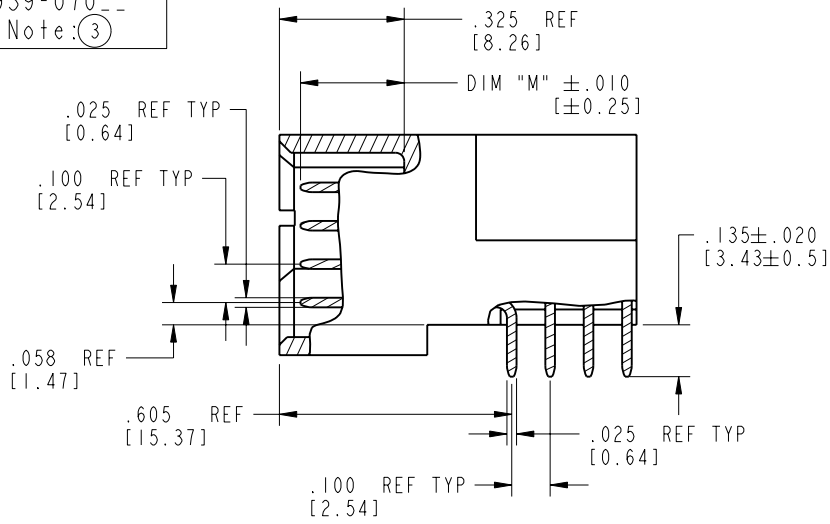
Tous droits strictement réservés. Reproduction ou communication o des liers interdite sous quelque forme que ce soit sans autorisation écrite du propriétaire. Propriete de c FCI. Droits de reproduction FCI.

**FCI**

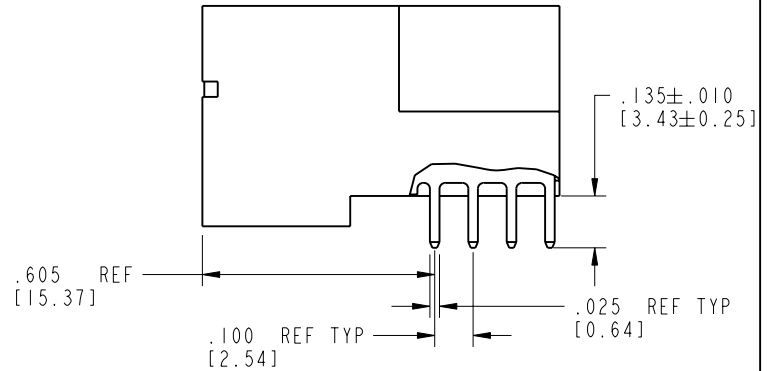
All rights strictly reserved. Reproduction or issue to third parties in any form, whatever is not permitted without written authority from the proprietor. Property of FCI. Copyright FCI.

PRODUCT NUMBER

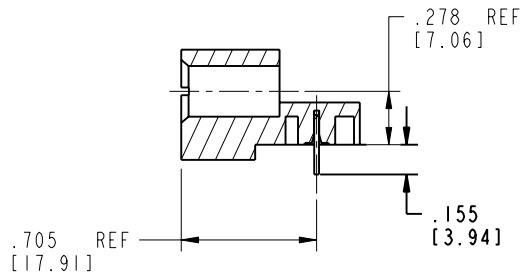
51939-070  
Note: (3)



BROKEN-OUT SECTION A-A  
SCALE 2:1



BROKEN-OUT SECTION B-B  
SCALE 2:1



SECTION C-C

mat'l code		SEE NOTE 2		tolerances unless otherwise specified		CUSTOMER		 www.fciconnect.com	
lfr	ecn no.	dr	date	linear	.XX±.01/0.X±0.3	COPY			
E				angles	.XXX±.005/0.XX±0.13	projection		 title 3ACP + 24S + 2P RIGHT ANGLE SOLDER HEADER	
				dr	.XXX±.0020/0.XXX±0.051	INCH/MM			
				engr	M. MOSTOLLER 6/18/03	scale		product family PwrBlade	
				chr	H. BREWBAKER 6/18/03	1:1		code 213	
				appd	M. MOSTOLLER 6/18/03			size	
sheet index	revision sheet							dwg no	
								A 51939-070	
								sheet 2 of 4	

cage code 22526

Pro/E

PDM: Rev:E

STATUS: Released

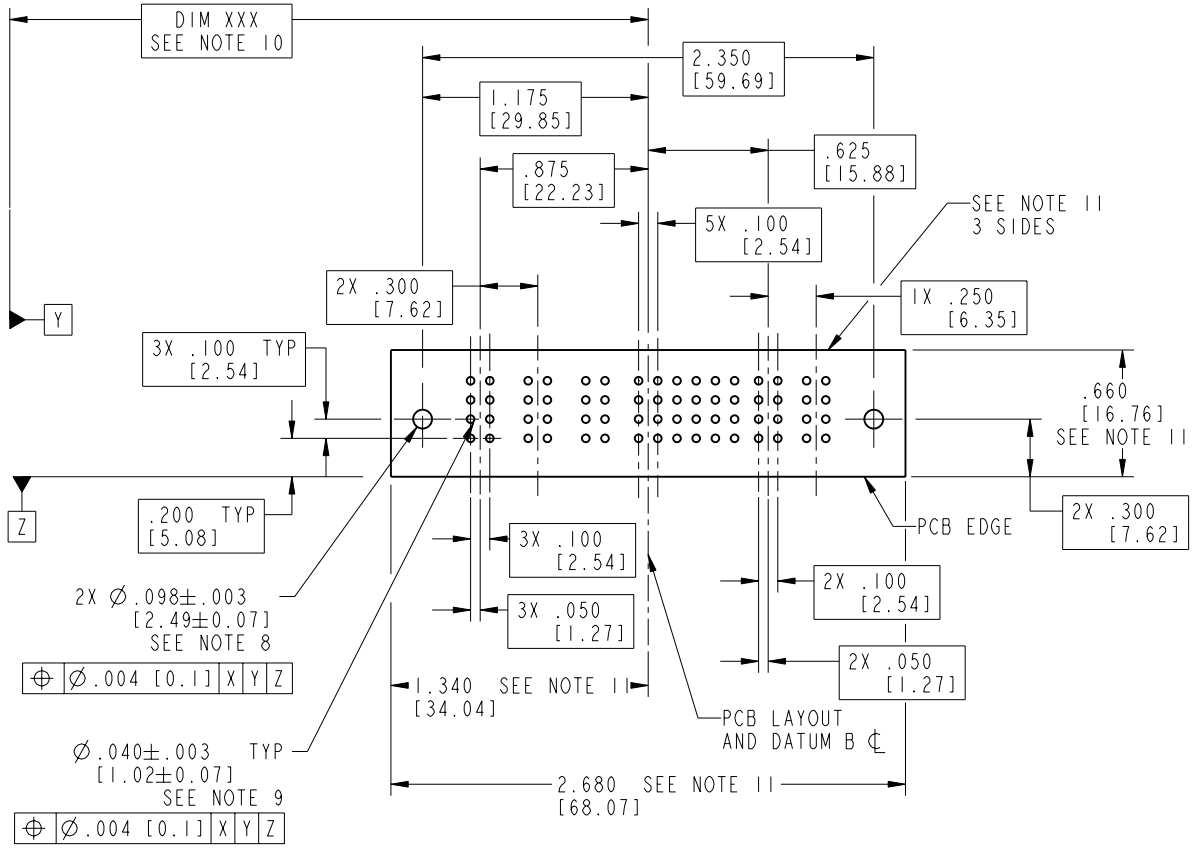
Printed: Aug 14, 2007

Tous droits strictement réservés. Reproduction ou communication o des liens interdite sous quelque forme que ce soit sans autorisation écrite du propriétaire. Propriété de c FCI. Droits de reproduction FCI.



All rights strictly reserved. Reproduction or issue to third parties in any form, whatever is not permitted without written authority from the proprietor. Property of FCI. Copyright FCI.

PRODUCT NUMBER  
51939-070--  
Note: (3)



RECOMMENDED PCB LAYOUT

mat'l code SEE NOTE 2				tolerances unless otherwise specified		CUSTOMER		<a href="http://www.fciconnect.com">www.fciconnect.com</a>	
lfr	ecn no.	dr	date	linear	.XX±.01/0.X±0.3	COPY			
E				angles	.XXX±.005/0.XX±0.13 .XXX±.0020/0.XXX±0.051			title 3ACP + 24S + 2P RIGHT ANGLE SOLDER HEADER	
				dr	M. MOSTOLLER 6/18/03	INCH/MM		product family PwrBlade	
				enrg	M. MOSTOLLER 6/18/03	scale 1:1		code 213	
				chr	H. BREWBAKER 6/18/03			size A	
				appd	M. MOSTOLLER 6/18/03			dwg no 51939-070	
sheet index		revision sheet						sheet 3 of 4	

cage code 22526

Pro/E

Tous droits strictement réservés. Reproduction ou communication o des liers interdite sous quelque forme que ce soit sans autorisation écrite du propriétaire. Propriete de c FCI. Droits de reproduction FCI.

All rights strictly reserved. Reproduction or issue to third parties in any form, whenever is not permitted without written authority from the proprietor. Property of FCI. Copyright FCI.



**PRODUCT NUMBER**

51939-070--  
Note: (3)

**NOTES:**

1. DIMENSIONS AND TOLERANCES ARE IN ACCORDANCE WITH ASME Y14.5M, 1994 UNLESS OTHERWISE SPECIFIED.

**CONNECTOR NOTES:**

- 2. HOUSING MATERIAL: UL 94 V-0 GLASS FILLED  
HIGH-TEMP THERMOPLASTIC  
POWER CONTACT MATERIAL: COPPER ALLOY  
SIGNAL PIN MATERIAL: COPPER ALLOY
- 3. 51939-070;51939-070LF;51939-070GLF PLATING SPEC. SEE PRINT:10064183
- 4. MANUFACTURER'S NAME, P/N, AND DATE CODE TO APPEAR ON THIS SURFACE.
- 5. PRODUCT SPECIFICATION GS-12-149.  
APPLICATION SPECIFICATION BUS-20-067.
- 6. PACKAGED IN TRAYS.

**PCB NOTES:**

- 7. ALL HOLE DIAMETERS ARE FINISHED HOLE SIZE.
- 8. MOUNTING HOLES, WHERE APPLICABLE, ARE UNPLATED.
- 9.  $\varnothing .0453 \pm .0010$  [1.151  $\pm$  0.025] DRILLED HOLES PLATED WITH .0003 [0.008] MIN SnPb OVER .001 [0.03] TO .003 [0.08] Cu PLATING TO ACHIEVE  $\varnothing .040 \pm .003$  [1.02  $\pm$  .07] HOLE.
- 10. "DIM XXX" TO BE DETERMINED BY THE CUSTOMER.
- 11. CONNECTOR KEEP-OUT ZONE.

mat'l code		SEE NOTE 2		tolerances unless otherwise specified		CUSTOMER		 www.fciconnect.com	
ltr	ecn no.	dr	date	linear	.XX±.01/0.X±0.3	COPY			
E				projection	.XXX±.005/0.XX±0.13			title	3ACP + 24S + 2P
				angles	.XXX±.0020/0.XXX±0.051			RIGHT ANGLE SOLDER HEADER	
				dr	M. MOSTOLLER 6/18/03	INCH/MM		product family	PwrBlade
				engr	M. MOSTOLLER 6/18/03			code	213
				chr	H. BREWBAKER 6/18/03	scale		size	dwg no
				appd	M. MOSTOLLER 6/18/03	1:1		A	51939-070
sheet index	revision sheet							sheet	4 of 4

coge code 22526